



Beckside, 33a Potter Hill | Pickering.YO18 8AA

An attractive bay fronted terraced home having a wealth of charm and character offering immaculately presented accommodation throughout situated in this highly sought after area of Pickering and within walking distance of the town centre.

The accommodation which lies on three floors comprises beautiful sitting room with bay window, spacious breakfast kitchen which has been fitted to an extremely high specification, on the first

floor a double bedroom and bathroom incorporating traditional style bath on claw feet plus second floor landing with two double bedrooms. Outside there is a rear south facing yard which is enclosed. Internal viewing is highly recommended and the cottage is being offered with no onward chain.



Guide Price £262,500

33a Potter Hill | Pickering



ENTRANCE DOOR LEADING TO:

SITTING ROOM

12'10" plus bay x 12'0" (3.91
plus bay x 3.66)

With exposed wooden flooring, bay window to the front elevation, central heating radiator, cupboard under the bay window, exposed timber to ceiling, attractive staircase with wrought iron decorative spindles.

BREAKFAST KITCHEN

12'11" x 12'0" max (3.94 x 3.66
max)

With belfast sink with mixer tap over set within granite worksurfaces,

extensive range of high quality wall and base units incorporating drawer compartments, built in fridge and freezer, built in dish washer, built in washer/dryer, Aga, Breakfast bar with granite worksurface with cupboards below. Central heating radiator, feature brick fireplace with decorative inset tiling, wooden surround and tiled hearth with cast iron grate; feature stone archway over back door leading into the rear yard.

FIRST FLOOR LANDING

BEDROOM ONE

12'10" x 8'7" (3.91 x 2.62)

With sash window to the front elevation, central heating radiator.



BATHROOM

11'8" x 8'10" (3.56 x 2.69)

Good sized comprising traditional style bath with claw feet, shower cubicle with shower rose, wash hand basin with tiled splash-backs, low flush w.c. Chrome heated towel rail incorporating traditional style radiator. Sash window, cast iron fireplace with tiled hearth and large storage cupboard.

SECOND FLOOR LANDING HALF LANDING

With window and stairs then lead onto the second floor landing.

BEDROOM TWO

12'11" x 12'1" (3.94 x 3.68)

With window having secondary double glazing and central heating radiator.

BEDROOM THREE

12'9" x 9'0" (3.89 x 2.74)

Sash window and central heating radiator.

OUTSIDE

Enclosed rear yard with seating area.

NOTE

33a Potter Hill is presently run as a successful holiday cottage. The vendor will be happy to discuss figures with any interested parties. The vendor would also be happy to negotiate on the furniture within the property.

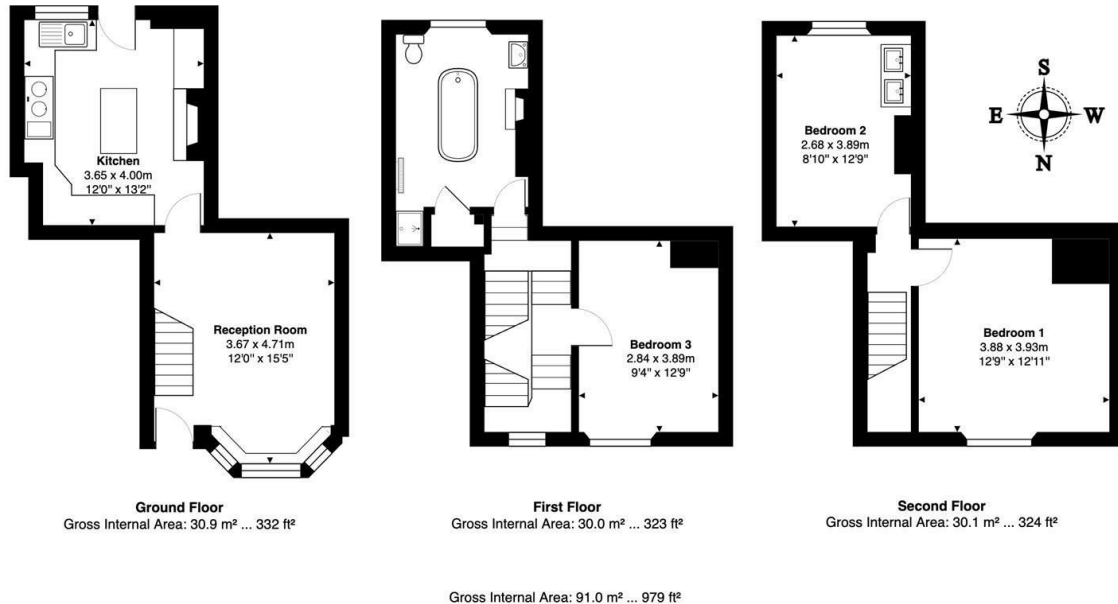
SERVICES

Mains gas, electric, water and drainage are connected.



33a Potter Hill | Pickering

33A Potter Hill, Pickering, YO18 8AA



All measurements are approximated for display purposes only and should be independently verified
Copyright © 2025 Matt Hillier Photographer
www.matthillier.co.uk

VIEWING

By telephone appointment with the Agents, Pickering Office. Tel: 01751 472724

COUNCIL TAX BAND

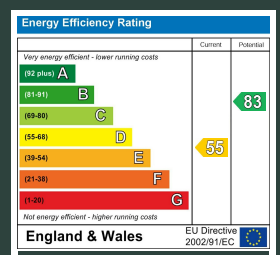
ENERGY PERFORMANCE RATING

D

St Georges House 39 Market Place, Pickering, YO18 7AE

t: 01751 472724

e: pickering@boultoncooper.co.uk



boultoncooper.co.uk



CONSUMER PROTECTION FROM UNFAIR TRADING REGULATIONS 2008

The description contained in this brochure is intended only to give a general impression of the property, its location and features, in order to help you to decide whether you wish to look at it. We do our very best to provide accurate information but we are human, so you should not allow any decisions to be influenced by it. For example any measurements are approximate and, where such things as central heating, plumbing, wiring or mains services are mentioned, we would advise you to take your own steps to check their existence and condition. Although we cannot accept any responsibility for any inferences drawn from this brochure or any inaccuracy in it, we shall always try to help you with any queries.

BoultonCooper for themselves and for the vendors or lessors of the property/properties, whose agents they are, give notice that (i) the particulars are produced in good faith, are set out as a general guide only and do not constitute any part of the contract; (ii) no person in the employment of BoultonCooper has any authority to make or give representation or warranty whatever in relation to this/these property/properties.

BC
Est. 1801